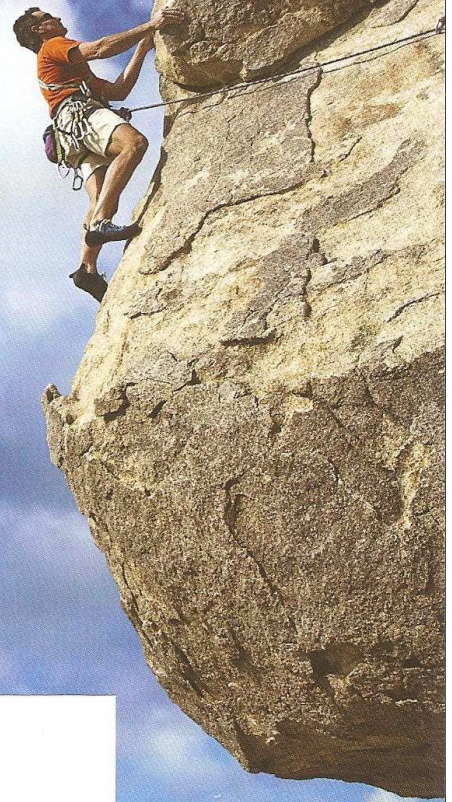
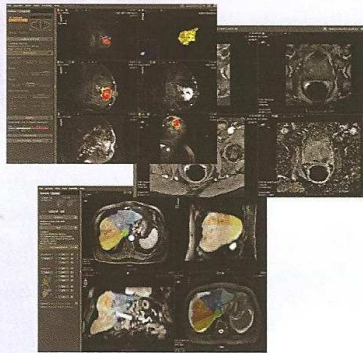


Re-Energizing Clinical Workflow

CADstream®

CAD for breast, liver & prostate MRI

- Standard of care
- Fastest system in the industry
- Easiest system to learn & use
- Integrated with leading PACS
- Reliable and fast support



Visit www.merge.com today to evaluate Merge's diagnostic imaging solutions:

CADstream with applications for:

Breast • Liver • Prostate

Merge Mammo™

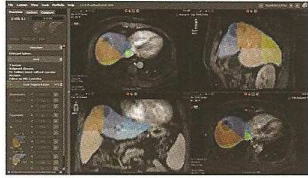
Fusion Workstation™

FusionWeb™ Clinician Access Portal

Merge Patient Kiosk™

Mecco Medical GmbH
CH-5036 Oberentfelden
T+41 62 534 67 11
www.mecco.ch

Product Highlights



Streamline Your Workflow

CADstream® with applications breast, liver & prostate MRI

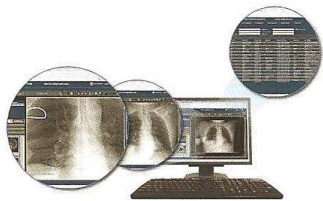
CADstream, the standard of care in MRI-CAD for breast studies, and the only MRI-CAD system with customized applications, now includes applications designed specifically for the liver and the prostate. CADstream automates and standardizes the analysis and interpretation of MRI studies, dramatically reducing study processing and physician interpretation time, while improving study reporting. CADstream helps practices lower costs, increase referrals and improve physician patient communication.



Accelerate Your Productivity in Digital Breast Imaging

Merge Mammo™ 7.2 delivers multi-modality images to a single workstation

Offered as a stand-alone workstation or as an integrated solution with Fusion Workstation, Merge Mammo is a vendor-neutral digital mammography workstation that lets you display and read multi-modality images — digital mammography, ultrasound, MR or CT — all from a single workstation. Beyond dedicated breast imaging features, Merge Mammo also includes a wide range of standard manipulation and navigation tools — like the new Lesion Contouring and Cross-correlation tools — that make it easier than ever to view and manipulate series of images for dynamic, highly efficient comparisons.



Overcome the Image Distribution Dilemma and Increase Your Referral Base

FusionWeb™ zero-client Clinician Access Portal works with any PACS, RIS, HIS or EMR

FusionWeb Clinician Access Portal is a true, zero-client solution with interactive imaging capabilities that allows clinicians and partners to use their preferred Web browser to send (and receive) images and reports without the hassle of ActiveX controls, downloads or constant battles with security protocols or browser compatibility. Completely secure and HIPAA-compliant, FusionWeb turns your legacy PACS into an imaging interoperability portal for all of your systems, and does not require data migration or extra storage to implement. In combination with our Fusion RIS/PACS MX™ (now with embedded billing) and hosted applications (SaaS), you have a complete image management solution.



Empower the Patient. Streamline Your Workflow.

The Merge Patient Kiosk™ Delivers significant ROI Benefits to Competitive MRI Practices

As today's patients are more Web savvy and want to be involved in managing their care, the Merge Patient Kiosk is a unique solution that simplifies processes in order to increase patient satisfaction, while also driving cost savings for your organization. This solution allows patients to control their onsite experience, from checking in to viewing bills and providing payment to scanning cards and documents. The kiosk provides fast and easy access that leverages live agent assistance with avatar-based technology. In combination with the FusionWeb Patient Access Portal™, patients can extend control to scheduling, pre-registration, results delivery and bill payment.

Fusion Workstation™ 3.1 with CADstream & Merge Mammo*

One simple solution for all your workflow concerns

Fusion Workstation will soon offer integrated CADstream and Merge Mammo to bring you an intuitive, intelligent solution that understands the reality of a radiologist's faced-paced day. Based on smart client technology, an effortless user interface, and dynamic built-in CADstream and Merge Mammo applications, plus an expansive set of communication tools, Fusion Workstation's robust, 64-bit compatible platform delivers reliable, stable performance that a radiologist expects, plus the tools clinicians and referring physicians demand.

ACR/National Mammography Database Output File for Fusion RIS™*

Gain meaningful, comparative information to enhance the practice of mammography

Using the new ACR/NMD Output File Module for Fusion RIS, women's health facilities can quickly and easily upload their data to the National Mammography Database which compiles and standardizes a comprehensive collection of radiology data from sites throughout the United States. As a result, women's health practices gain access to reliable, comparative information for benchmarking national and regional cancer detection rates, false positive rates, recall rates and positive predictive values, and can use that information to improve performance and the quality of care.

*Note that as to Work In Progress, Merge Healthcare is not legally obligated to develop or continue to develop such Works in Progress that may include the features and functionality described herein.